



WHIRLPOOL AUSTRALASIA

CONSUMER SERVICES

SERVICE MANUAL

MICROWAVE OVEN

Model MD364/WH
Version 8538 231 53291

Copyright © 2001 Whirlpool (Australia) Pty. Limited
All rights strictly reserved. Reproduction or issue to third parties in any form whatsoever is not permitted without written authority of Whirlpool (Australia) Pty. Limited
Whirlpool is a registered trademark of Whirlpool U.S.A.

This documentation is intended only for qualified technicians who possess the required qualifications and are aware of the regulatory requirements applicable to servicing electrical appliances.

BLANK PAGE

CONTENTS

	Page
INTRODUCTION SAFETY	4
TECHNICAL DATA	5
EXPLODED VIEW	6
SPARE PARTS LIST	7 - 8
CIRCUIT DIAGRAM	9
CONTROL CIRCUIT DIAGRAM	10

INTRODUCTION SAFETY

INTRODUCTION

Before leaving the factory each oven is carefully checked.

It must, however, be installed and used correctly.

Despite all the steps taken to make the oven safe, the safety is dependent on the correct installation and the fact that the user understands how to use and maintain the oven.

The information in this section should be used as a reminder that the oven is safe and that anyone who uses it must first read the instructions for use in order to be able to use the oven correctly and obtain best results.

SAFETY

To avoid injury to yourself and damage to the appliance always work to the following rules when servicing an oven.

Always disconnect the plug from the mains before starting work.

If there is no plug switch off the electric supply at the control box.

When you have finished servicing an oven before you reconnect it to the mains, make sure that:

- all the internal connections are correct
 - the wires are insulated and not touching the door or the cabinet or anything sharp
 - all the earth connections are electrically and mechanically sound
 - do not modify or anyway interfere with the safety devices built-in to the oven
 - make sure that each replacement part you use conforms to the manufacturer's specifications
- Do not start a repair if you have any doubt as to your ability to complete it.

CAUTION - MICROWAVE RADIATION

PERSONNEL SHOULD NOT BE EXPOSED TO THE MICROWAVE ENERGY WHICH MAY RADIATE FROM THE MAGNETRON, WAVEGUIDE OR ANTENNA IF THEY ARE IMPROPERLY USED OR CONNECTED. ALL INPUT AND OUTPUT MICROWAVE CONNECTIONS, WAVEGUIDES, FLANGES AND GASKETS MUST BE SECURE.

NEVER OPERATE THE DEVICE WITHOUT A MICROWAVE ENERGY ABSORBING LOAD ATTACHED.

NEVER LOOK INTO AN OPEN WAVEGUIDE OR ANTENNA WHILE THE DEVICE IS ENERGIZED.

NEVER OPERATE AN OVEN WITH CABINET OFF WITHOUT MEASURING THE MICROWAVE LEAKAGE AROUND MAGNETRON AND VISIBLE MICROWAVE CONNECTIONS (WELDING JOINTS).

Do not operate the oven if the following conditions exist:

- the door does not close firmly against the door support because of the door being warped or the hinges damaged.
- The door trims or seals are damaged.
- If there is any visible damage to the oven.
- if the door does not close properly.

Avoid operating the oven if known components in the interlock system, oven door or microwave generating assembly are known defective. They must be replaced.

WARNING - HIGH VOLTAGE

IT IS POSSIBLE TO COME IN CONTACT WITH LETHAL HIGH VOLTAGE WHEN WORKING WITH HV TRANSFORMER, HV CAPACITOR AND MAGNETRON. THEREFORE NEVER TRY TO MEASURE THE HIGH VOLTAGE. ALWAYS TAKE UTMOST CARE WHEN PERFORMING ELECTRICAL MEASUREMENTS INSIDE THE OVEN.

TECHNICAL DATA**Dimensions of cabinet**

Height	330	mm
Width	553	mm
Depth	560	mm

Dimensions of cavity

Height	227	mm
Width	372	mm
Depth	395	mm
Cavity volume	34	l
Turntable diameter	360	mm

Weight

Net	25	kg
-----	----	----

Electrical

Voltage	230 - 240	V
Frequency	50	Hz

Power

Power consumption	2400	W
Output power (Microwave)	800	W
Grill	1400	W
Hot air	1500	W
Microwave frequency	2450 ±50	MHz

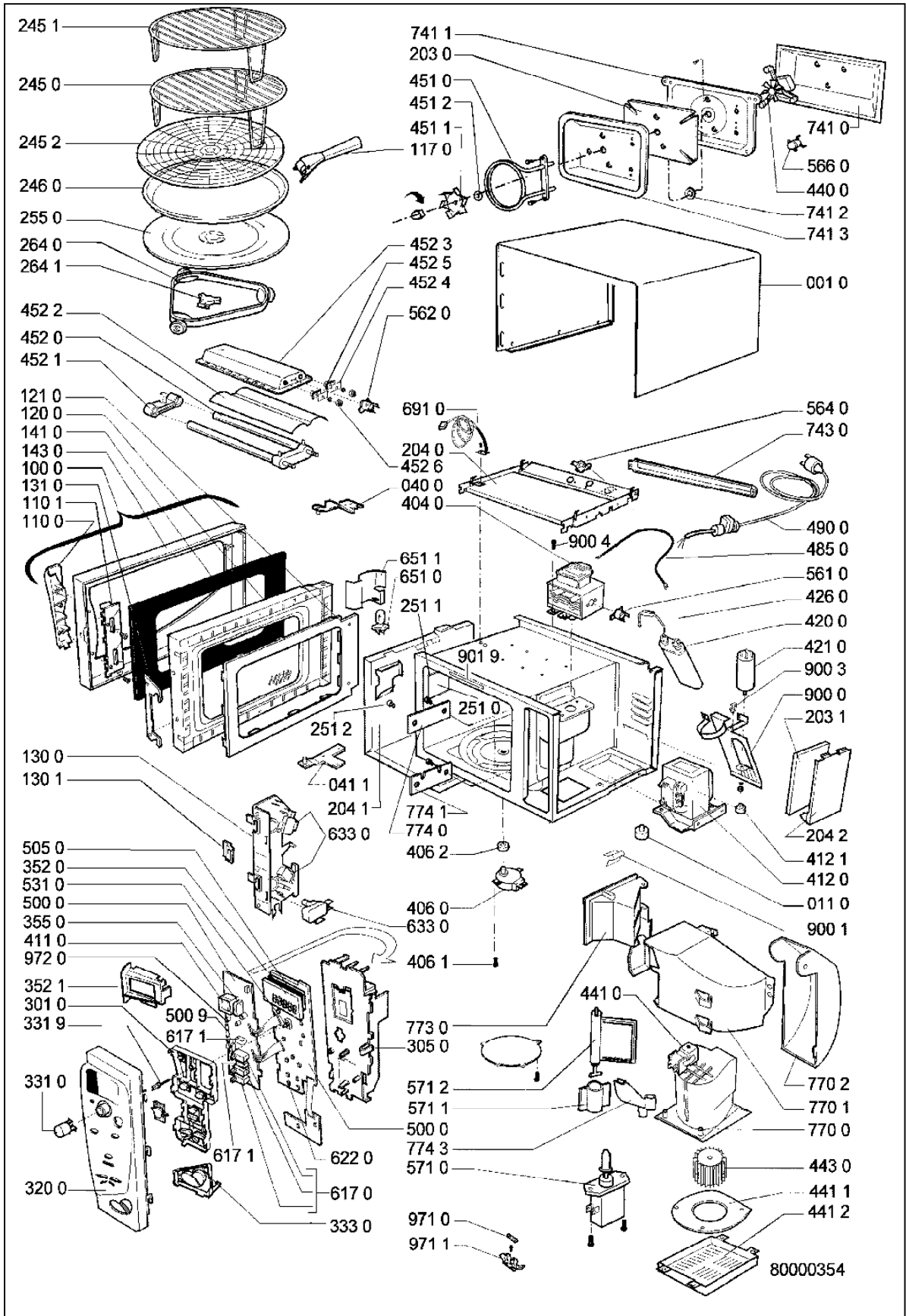
Timer

90	min
----	-----

Features

- Quartz grill
- Crisp function
- Jet start
- Jet defrost
- Auto crisp
- 7 power levels
- Cavity inox
- Child lock
- 24 hour clock

EXPLODED VIEW



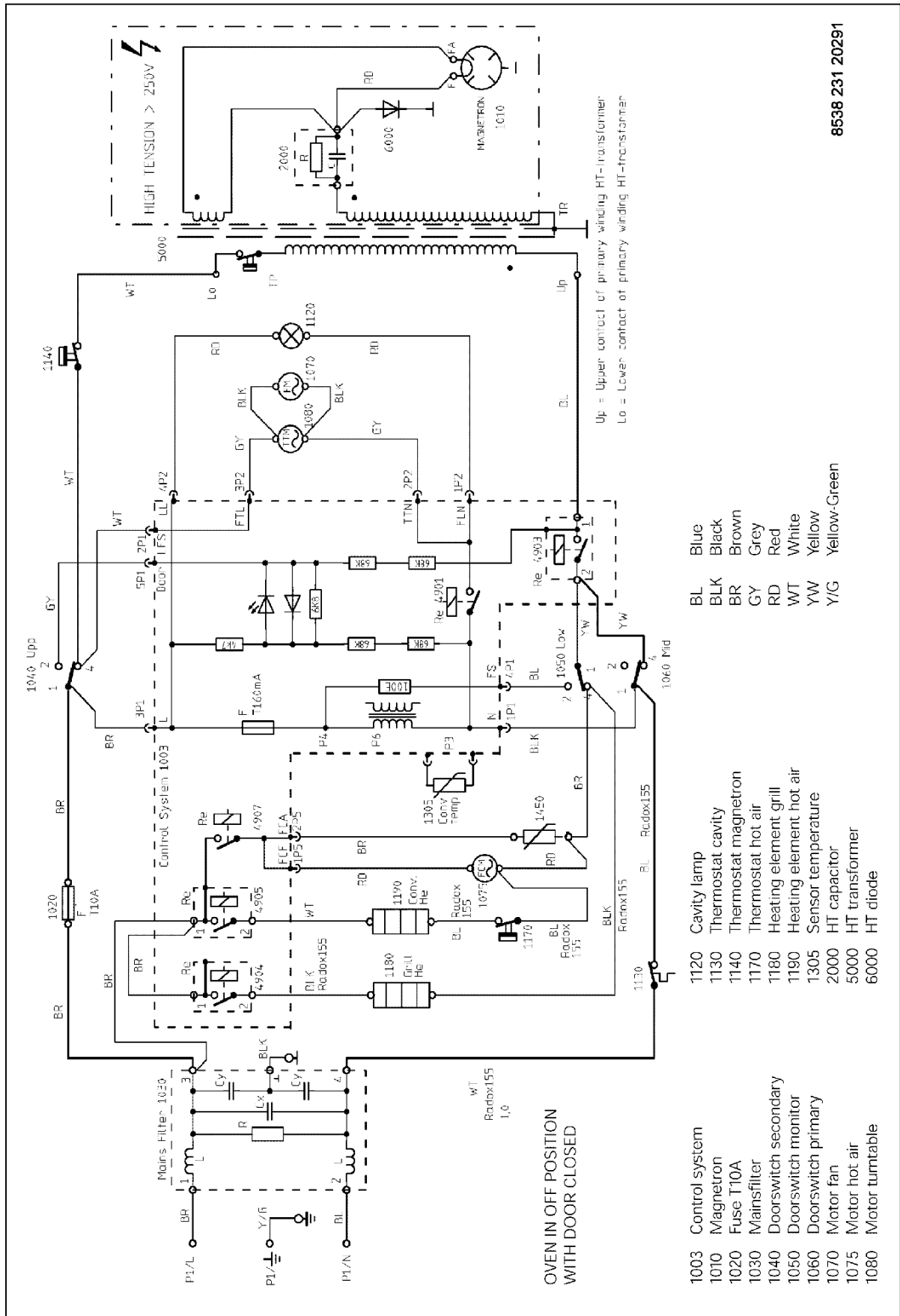
PARTS LIST

Item	Part No	Description
001 0	4819 442 38042	Cabinet, WH
011 0	4819 462 79423	Foot
040 0	4819 417 19384	Hinge, upper
041 1	4819 417 19379	Hinge, lower
100 0	4812 440 98072	Door complete, WH
110 0	4812 462 68032	Door handle, WH
110 1	4812 462 68033	Insert door handle
117 0	4819 498 78366	Handle for crisp plate
120 0	4819 442 38004	Door, inner
121 0	4819 459 48703	Door frame, inner door
130 0	4819 276 38171	Unit, pushbutton complete
130 1	4812 466 88482	Slide block
131 0	4819 535 98529	Door latch
141 0	4812 450 58461	Oven glass, outer
143 0	4812 459 48097	Door frame, outer, WH
203 0	4819 325 18058	Insulation
203 1	4819 325 18057	Insulation
204 0	4819 442 38039	Plate, protection
204 1	4819 466 89241	Plate, protection, heat left
204 2	4819 466 89242	Plate, protection, heat right
245 0	4819 458 19981	Grid high
245 1	4819 458 58581	Grid low
245 2	4819 458 58562	Grid defrost
246 0	4819 310 18537	Crisp plate VIP34
251 0	4819 462 79799	Cover, lamp
251 1	4819 468 18076	Gasket
251 2	4819 505 18238	Nut self tap
255 0	4819 466 78348	Turntable glass
264 0	4819 520 18029	Ring, set
264 1	4819 462 38767	Crosspiece
301 0	4812 404 78411	Button assy, WH
305 0	4812 256 98035	Bracket
320 0	4812 453 59264	Panel, control, WH
331 0	4812 410 78072	Knob, timer, WH
331 9	4812 492 58033	Shaft
333 0	4812 401 18502	Button start/stop, WH
352 0	4812 130 38711	Display
352 1	4812 491 48009	Frame hood for display
355 0	4819 280 18029	Buzzer
404 0	4819 131 58019	Magnetron
406 0	4819 361 18381	Motor TT
406 1	4819 502 18372	Screw for TT-Motor
406 2	4819 532 68686	Gasket ring for TT
411 0	4819 148 68076	Transformer electronics
412 0	4819 145 78217	Transformer, HT 240V
412 1	4819 462 48431	Shock absorber
420 0	4819 121 18299	Capacitor 1,15 m F-2100V
421 0	4819 121 18162	Filter, mains
426 0	4819 218 38039	Diode, HV
440 0	4819 361 18356	Motor hot air
441 0	4819 361 18361	Motor Blower
441 1	4819 462 58146	Bottom fan
441 2	4819 466 98922	Casing
443 0	4819 515 28224	Fan wheel
451 0	4819 259 28888	Tube, heating FA 240V

PARTS LIST (Cont.)

Item	Part No	Description
451 1	4819 515 28223	Fan wheel FC
451 2	4819 532 28256	Washer for motor
452 0	4819 259 28914	Infrared element, 1000W, 240V
452 1	4819 404 78841	Holder quartz tube
452 2	4819 458 58522	Reflector quartz tube
452 3	4819 418 79082	Cover, bar
452 4	4819 532 58263	Washer
452 5	4819 532 58262	Washer ceramic
452 6	4819 505 18248	Nut
485 0	4819 321 18133	Cable, HT
490 0	4819 321 18242	Cable, mains Australia
500 0	4812 214 78796	Control unit
500 9	4819 113 88001	Resistor 100 Ohm
505 0	4812 209 88015	Microprocessor
531 0	4812 101 08807	Potentiometer
561 0	4819 282 48247	Thermostat 145 °C
562 0	4819 282 48277	Thermostat 160 °C
564 0	4819 282 48275	Thermostat 165 °C
566 0	4812 282 48255	Thermostat FC 145 °C
571 0	4819 360 58589	Valve
571 1	4819 502 98002	Screw to valve FC
571 2	4819 360 58588	Valve
617 0	4812 280 68342	Relay 24V DC
617 1	4812 280 68349	Relay
622 0	4819 276 18273	Switch VKS
633 0	4812 271 38406	Microswitch
651 0	4812 134 18008	Lamp
651 1	4819 380 28017	Reflector
691 0	4819 210 78081	Sensor temp.
741 0	4819 462 79801	Cover
741 1	4819 466 89243	Heat shield FC
741 2	4819 532 68722	Shaft seal for motor
741 3	4819 418 79213	Cover FC
743 0	4819 458 58527	Air guide grill
770 0	4819 462 79803	Cover
770 1	4819 462 79797	Air guide
770 2	4819 462 38742	Air guide, magnetron
770 3	4819 462 79798	Air guide
774 0	4819 462 79721	Cover upper
774 1	4819 462 79934	Cover lower
774 3	4819 530 28914	Conveyor
900 0	4812 404 78409	Holder capacitor
900 1	4819 492 68729	Clip
900 3	4819 492 68558	Clip, fix
900 4	4819 502 18374	Screw for magnetron, not shown
901 9	4819 453 49874	Recipe guide General
901 9	4819 453 49875	Recipe guide Europe
971 0	4819 252 28125	Fuse T10A
971 1	4819 256 38016	Bracket for fuse
972 0	4812 452 28129	Fuse T160mA

CIRCUIT DIAGRAM



CONTROL CIRCUIT DIAGRAM

